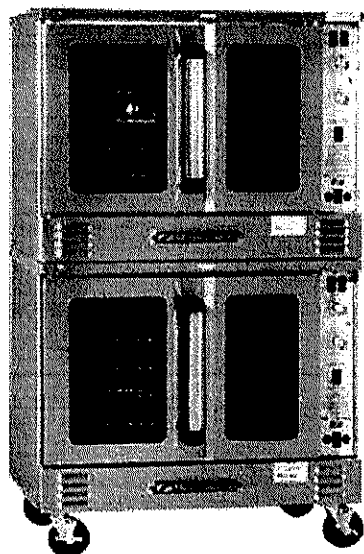




CONVECTION OVEN

SL-SERIES

GAS, DOUBLE DECK



SLGS/22SC shown with optional casters

- | | |
|------------------------------------|------------------------------------|
| <input type="checkbox"/> SLGS/22SC | <input type="checkbox"/> SLGB/22SC |
| <input type="checkbox"/> SLGS/22TC | <input type="checkbox"/> SLGB/22TC |

Standard Features

- Patented, high efficiency, inshot burners
- 72,000 BTU (NAT or LP) per oven cavity
- Available standard and bakery depths
- Double deck convection oven is 66.8" in height
- Patented "plug-in, plug-out" control panel
- Slide out control panel for full view servicing
- Stainless Steel front, top and sides
- Dependent glass doors (Full 180° opening)
- Energy saving high efficiency glass windows
- Heat keeping dual door seal system
- Coved, fastener-free, porcelain interior
- Stay cool heavy duty door handle
- Soft Air, two speed, 1/2 hp, fan motor
- 11-position rack guides and 5 plated oven racks
- Electronic ignition with solid state temperature controls
- Forced cool down fan mode
- Oven "heat" light cycles with burners
- Interior oven lights
- (1) year limited parts and labor warranty (reference <http://www.southbendnc.com/service.html> for limited warranty details)

Available Controls

SC-Standard Controls

140°F to 500°F solid state thermostat and 60 minute mechanical cook timer.

TC-Touchscreen Controls

150°F to 550°F temperature controller with 140°F to 200°F "Hold" thermostat. Digital display shows time and temperature. A fan cycle timer pulses the fan. Recipes can be created and used in oven group 'Rack' mode to cook multiple items at once on different timers.

OPTIONS & ACCESSORIES AT ADDITIONAL COST

- | | | |
|---|---|--|
| <input type="checkbox"/> List the voltage, frequency, and amps (see utility information).
___ VAC, ___ Phase, ___ Hz | <input type="checkbox"/> NRG system | <input type="checkbox"/> Down draft diverter for direct flue |
| <input type="checkbox"/> Stainless steel rear jacket | <input type="checkbox"/> Stainless steel exterior bottom | <input type="checkbox"/> 3/4" quick disconnect with flexible hose (specify length: 3ft, 4ft, or 5ft) |
| <input type="checkbox"/> Stainless steel oven interior | <input type="checkbox"/> Swivel Caster - front with locks | <input type="checkbox"/> 2" air insulation panel (stainless steel only) |
| | <input type="checkbox"/> Casters 4" or 6" | <input type="checkbox"/> Export crating only |
| | <input type="checkbox"/> Knocked down packaging | <input type="checkbox"/> Stainless steel doors |
| | <input type="checkbox"/> Marine edge top | |

STANDARD CONSTRUCTION SPECIFICATIONS

Exterior Finish: Stainless steel front, top and sides.

Doors: Dependent doors with windows. Low emission glass, stainless steel construction, heavy-duty welded steel frame and 5/8" diameter full-length hinge pin.

Oven Interior: Porcelain enamel finish, coved, fastener free.

Rack and Rack Guides: Heavy-duty removable wire rack guides spaced on 1-5/8" centers offer 11 different rack positions. 5 wire racks provided with each oven.

Blower Fan and Motor: 1/2hp, 2-speed motor, 1710/1120 r.p.m

Oven Heating: 72,000 BTU (NAT or LP). Oven heating is regulated by an

adjustable solid state thermostat control. Blower fan circulates air within the cavity "scrubbing" heat to the oven interior for even heat distribution within the cavity.

Electronic Ignition: Hot surface ignitor with flame safety device.

Control Panel: Located on front, at right side of oven, away from heat zone. Slide out panel extends over 17" for easy servicing.

Interior Lights: Two 40 watt high temperature recessed lamps located within the oven cavity.

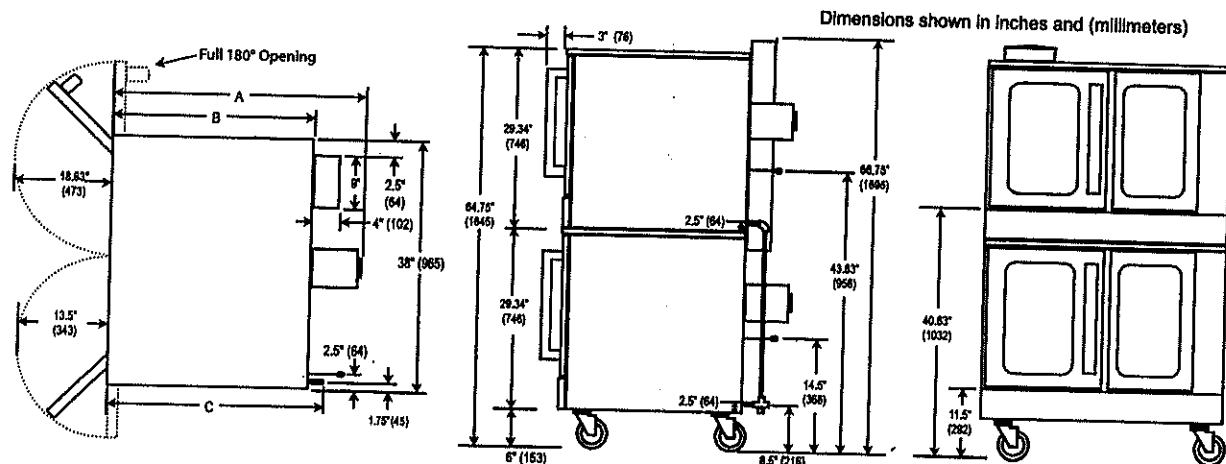
Legs: 6" Stainless steel, triangular legs standard.



Approval Notes: _____

Models: ☐ SLGS/22SC ☐ SLGS/22TC ☐ SLGB/22SC ☐ SLGB/22TC

SLG22



DIMENSIONS

MODEL	DEPTH			OVEN INTERIOR			RACK CLEARANCE		SHIPPING CRATE				
	A	B	C	WIDTH	DEPTH	HEIGHT	WIDTH	DEPTH	WIDTH	DEPTH	HEIGHT	VOLUME	WEIGHT
SLGS/22	37.25" (946)	30.25" (768)	35.50" (873)	29" (737)	21.50" (546)	20" (508)	28.25" (718)	21" (533)	57.50" (1461)	45.5" (1156)	81.5" (2070)	123.4 cu. ft. (3.49 cu. m.)	1040 lbs (471.7 kg.)
SLGB/22	43.50" (1105)	36.50" (927)	41.75" (1060)	29" (737)	29" (737)	20" (508)	28.25" (718)	27.25" (692)	57.50" (1461)	45.5" (1156)	81.5" (2072)	123.4 cu. ft. (3.49 cu. m.)	1100 lbs (499.0 kg.)

Dimensions shown in inches and (millimeters)

UTILITY INFORMATION

GAS: • Standard and Bakery Depth: 72,000 BTU (NAT or LP) per oven cavity

- One 3/4" male connection
- Required minimum inlet pressure:
 - Natural gas 7" W.C.
 - Propane gas 11" W.C.

ELECTRIC: Standard: 120/60/1 phase, furnished with 6' cord w/3- prong plug (1 plug/deck). NEMA #5-15p. Total maximum amps 7.9.

Optional: 208/60/1 (190-219 volts). Supply must be wired to junction box with terminal block located at rear. Total maximum amps 4.3 per deck.

Optional: 240/60/1 (220-240 volts). Supply must be wired to junction box with terminal block located at rear. Total maximum amps 3.8 per deck.

Optional: 240/50/1 (208-240 volts). Supply must be wired to junction box with terminal block located at rear. Total maximum amps 6.0 per deck

MISCELLANEOUS

- If using flex hose connector, the I.D. should not be smaller than 3/4" and must comply with ANSI Z 21.69.
- If casters are used with flex hose, a restraining device should be used to eliminate undue strain on the flex hose.
- Clearances from combustibles: Top-0", bottom-0", right side-0" and left-2"
- Recommend - install under vented hood
- Check local codes for fire and sanitary regulations

- If the unit is connected directly to the outside flue, an A.G.A. approved down draft diverter must be installed at the flue outlet of the oven
- Oven cannot be operated without fan in operation

NOTICE:

Southbend has a policy of continuous product research and improvement. We reserve the right to change specifications and product design without notice. Such revisions do not entitle the buyer to corresponding changes, improvements, additions or replacements for previously purchased equipment.

**INTENDED FOR COMMERCIAL USE ONLY.
NOT FOR HOUSEHOLD USE.**



**T&S BRASS AND BRONZE WORKS, INC.**2 Saddleback Cove / P.O. Box 1088
Travelers Rest, SC 29690

Model No.

HG-4-K Series

Item No.

Travelers Rest, SC: 800-476-4103 • Simi Valley, CA: 800-423-0150 • Fax: 864-834-3518 • www.tsbrass.com

This Space for Architect/Engineer Approval

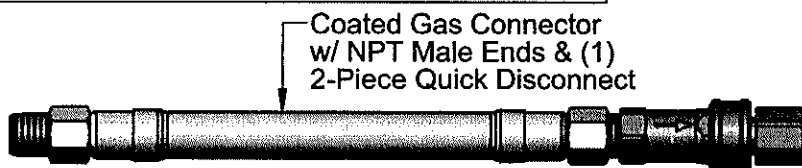
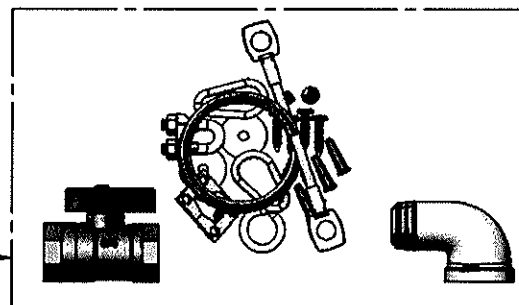
Job Name _____ Date _____

Model Specified _____ Quantity _____

Customer/Wholesaler _____

Contractor _____

Architect/Engineer _____

SAFE·T·LINKInstallation Kit:
Restraining Cable,
Street El, Ball Valve

"L" = Length	1/2" NPT
12"	HG-4C-12K
24"	HG-4C-24K
36"	HG-4C-36K
48"	HG-4C-48K
60"	HG-4C-60K
72"	HG-4C-72K

"L" = Length	3/4" NPT
12"	HG-4D-12K
24"	HG-4D-24K
36"	HG-4D-36K
48"	HG-4D-48K
60"	HG-4D-60K
72"	HG-4D-72K

"L" = Length	1" NPT
12"	HG-4E-12K
24"	HG-4E-24K
36"	HG-4E-36K
48"	HG-4E-48K
60"	HG-4E-60K
72"	HG-4E-72K

"L" = Length	1 1/4" NPT
12"	HG-4F-12K
24"	HG-4F-24K
36"	HG-4F-36K
48"	HG-4F-48K
60"	HG-4F-60K
72"	HG-4F-72K

HG-4-K Series Product Configurator: HG - 4 ☐ - ☐ KEx: HG - 4 ☐ - ☐ KGas Hose, 3/4" NPT Male Ends, 36" Length, (1) 2-Piece Quick Disconnect,
(1) Street El, (1) Installation Kit

Product Specifications:

Safe-T-Link Gas Appliance Connector: Coated Gas Hose, NPT Male Ends, 2-Piece Quick Disconnect and Street Elbow

Product Compliance:

ANSI Z21.69 / CSA 6.16
NSF 2
NFPA 54

Drawn: JBC | Checked: JRM | Approved: JHB | Date: 08/24/16 | Scale: NTS | Sheet: 1 of 1

NENA HARRINGTON "HAWAII STATE HOSPITAL"